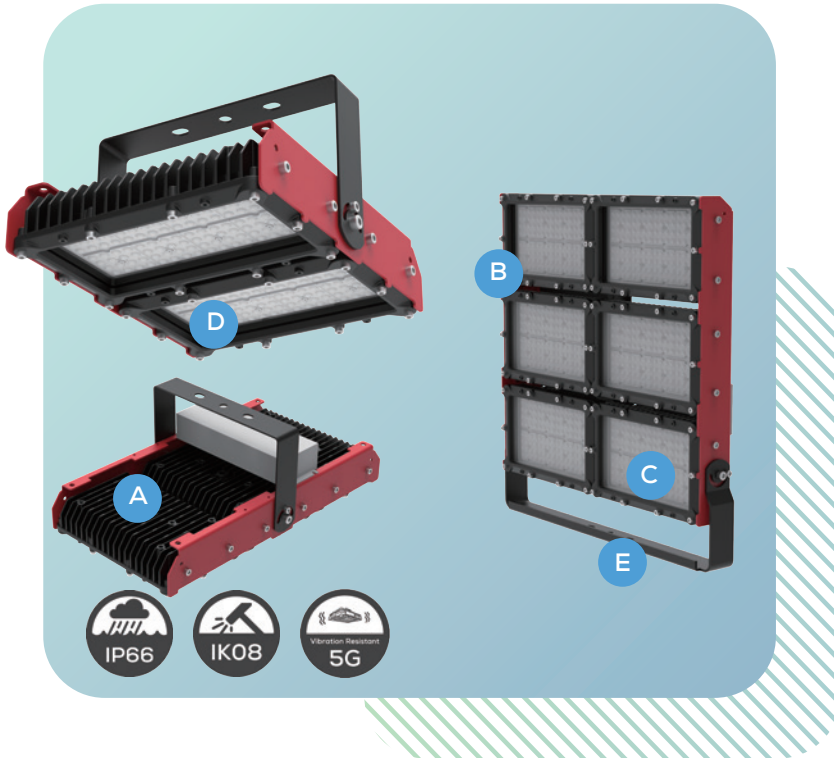


# STROM™ GSM

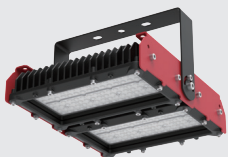
Up to 96,000lm, GSM heavy duty light is specially designed for different applications from harsh environment conditions to ordinary industrial workshops. Modular design to meet different power requirements. From 16,000 to 96,000 lumen output, it ideally replaces 250W-1000W HID fixtures.

## KEY FEATURES

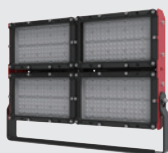


- A BUILD TO LAST.** Highly durable aluminium housing with a tempered and impact-resistant glass lens. Corrosion-resistant. Vibration, impact and shock resistant.
- B MODULAR DESIGN.** provides four models with light output ranging from 16,000 lumens up to 96,000 lumens.
- C GLASS LENS.** Passed IK08, tempered and impact-resistant glass.
- D MULTIPLE OPTICS.** 35°, 60°, 90°, 110°, T2, T3, T4, different lens provide more choices for various scenarios.
- E ADJUSTABLE U-BRACKET.** Allows an easy alignment of the floodlight.

## MOUNTING OPTIONS



Hanging



U-Bracket

## HEAVY AND HARSH FLOOD / HBAY LIGHT

### COMPLIANCES

CE  
 UL 1598 Wet Locations  
 UL 8750 LED Safety  
 IP66  
 IK08

### TECHNICAL DATA

#### ELECTRIC & OPTICAL

Rated Power	100/150/200/300/400/600W
Input Voltage	AC100-277, 347-480V
Lumen Output	16,000lm ~ 96,000lm
Luminous Efficacy (Lumens per Watt)	160Lm/W
Beam Angle	35° / 60° / 90° / T1 / T3 / T4
Color Temperature (CCT)	2700K 3000K 4000K 5000K

#### ENVIRONMENTAL & TECHNICAL

Ambient Temperature	-40°C~+50°C
Operating Humidity	10%~90% RH
Lens Material	Glass
Mounting Options	U-bracket
Net Weight	3.7kg (1 module)
	6kg (2 modules)
	9.3kg (3 modules)
	12kg (4 modules)

### FLOOD LIGHT OPTIONS

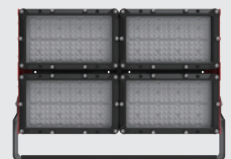
100W



200W



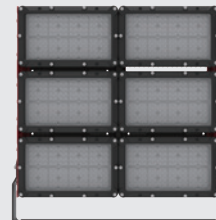
400W



300W



600W



### OPTIONS AND ACCESSORIES

- Safety cable
- Transparent or frosted glass
- 2700K 3000K 4000K 5000K color temperature
- Hanging ring / hook mounting accessories